



CHUAN SHENG

震動

VIBRATION MOTOR

馬達

Industrial and Commercial Vibrator Motor

INDUSTRY VIBRATION MOTOR



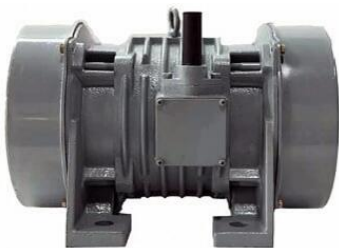
Vibration motor is the part of machine, is the source of vibrating, and is the heart of force. When heart has some problem, sometime is just not comfortable, but sometime will cause big trouble. Our mother company is professional motor production line test platform provider and more than 20 years industrial motors repair experiences. We guarantee our motor quality as well as reliability. Not only the motor design but also the material, we follow the high level manufacture requirements to produce the "heart of force". We believe better motor source will provide better vibration force." - CEO Mr. Wang

Product Description

- ✓ High-performance motor-driven vibrating generator
- ✓ Multi-model lineup meets the varied needs of customers
- ✓ Standardized screw size and location for vibrated object
- ✓ Solid housing (frame and base) design for long-life operation
- ✓ Easy maintenance & high reliability

Product Features and Options

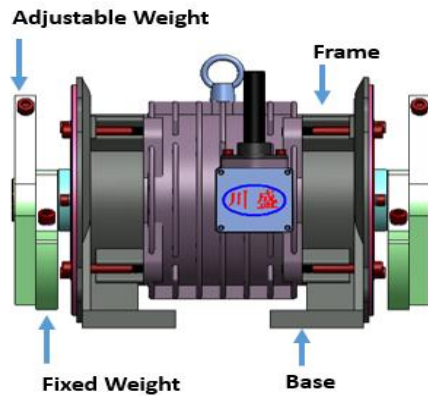
- Amplitude adjustment available
- Frequency (50/60) and Power input (110V/220V/380V/440V) selection by ordered
- Dust tight construction and splash-proof design
- Long life bearings and strengthen armature shaft
- Casting housing and enhancement screw base for strong protection
- Aluminum extrusion one piece formed housing for light-weight model (A-204, A-209, A-212, A-218, B-404, B-409, B-412)



APPLICATIONS

- ✧ Preventing clotting
- ✧ Feeder
- ✧ Vibrating sifters
- ✧ Cooling conveyors
- ✧ Material conveyors
- ✧ Mold release machines
- ✧ Vibration filters

Vibrating Motor Structure



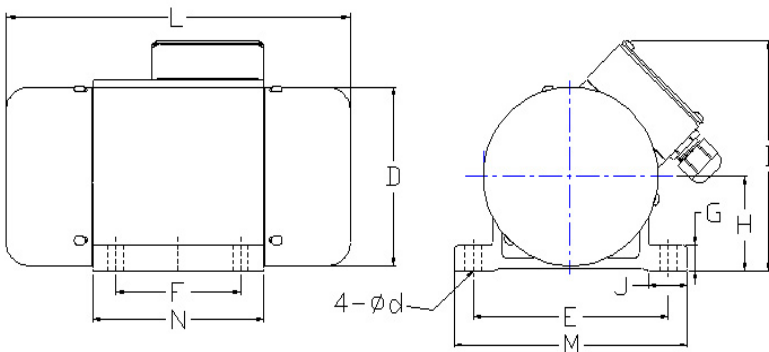
Adjustable weights are attached at both sides and the ends of the shaft. The fixed weight and one adjustable weight are varied. To adjust the vibrating force of CHUAN SHENG Vibrators is simple and easy

Product Drawings and Specifications

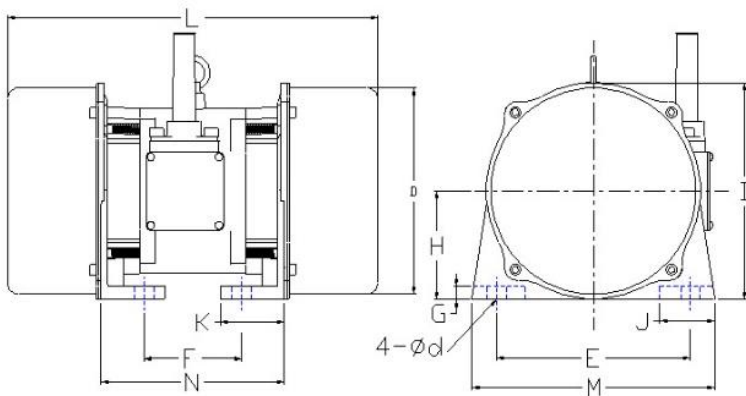
Drawings

※Paint color customize available

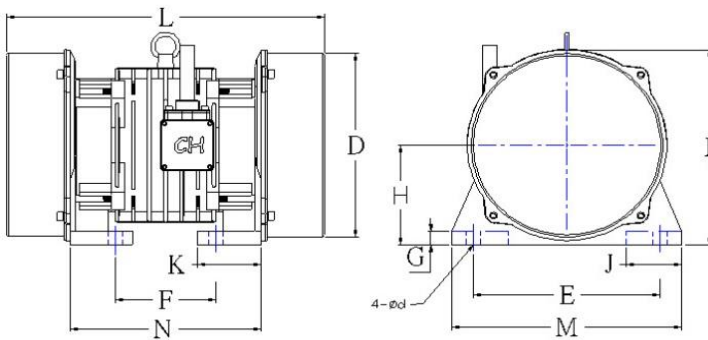
Housing A (Aluminum extrusion)



Housing B (Casting iron)



Housing C (Casting iron)



2 Pole Vibrator Speed

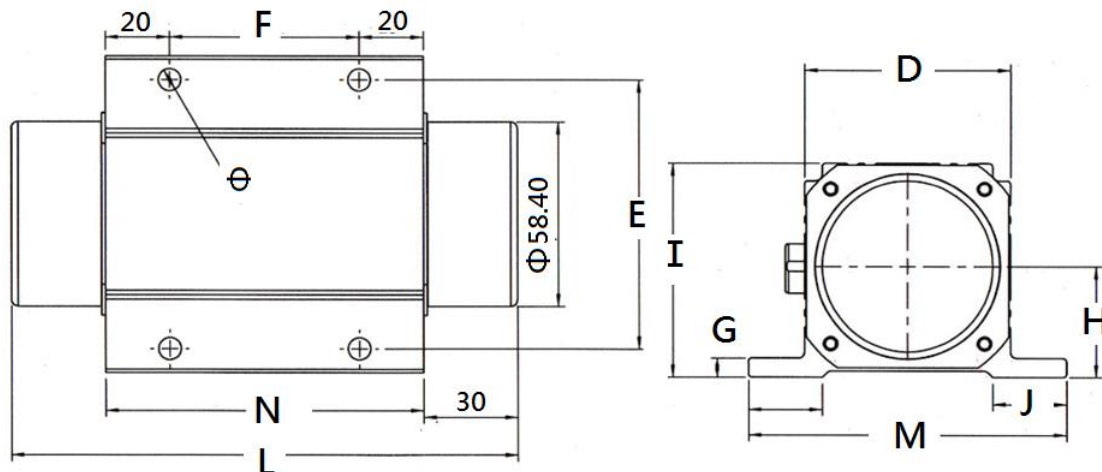
Theoretical speed in 50 Hz: 3000 rpm
Theoretical speed in 60 Hz: 3600 rpm

2 Pole Dimensions

Models	Power		Force Kg	Outer dimensions (mm)												Base Screw	Housing	Weight Kg
	HP	W		D	E	F	G	H	I	J	K	L	M	N	Φd			
A-204	1/16	45	50	111	125	50	16	59	150	25	—	197	150	85	11	M10	A	5.8
A-209	1/8	90	100	111	125	75	16	59	150	25	—	222	150	110	11	M10	A	7
A-212	1/6	120	180	111	125	75	16	59	150	25	—	222	150	110	11	M10	A	7.5
A-218	1/4	180	260	111	125	90	16	59	150	25	—	253	150	140	11	M10	A	9
A-225	1/3	250	360	190	180	90	13	100	200	50	57	325	230	170	18	M16	B	23
A-237	1/2	370	600	190	180	90	13	100	200	50	57	325	230	170	18	M16	B	25
A-255	3/4	550	750	190	180	90	13	100	200	50	57	325	230	170	18	M16	B	26
A-275	1	750	1000	222	220	140	16	120	238	65	60	340	275	210	20	M19	C	48
A-2150	2	1500	2000	267	260	140	20	145	285	80	90	445	320	267	28	M25	C	80

※ 1. A-204, A-209, A-212 have single phase (1 Φ) 110~120,220~240 and three phase (3 Φ) options · A-218 have single phase (1 Φ) 220~240 and three Phase (3 Φ); others are only three Phase (3 Φ)

2 Pole Single Phase (1Φ) Micro Vibrator motor



Models	Power		Force Kg	Outer dimensions (mm)												Base Screw	Housing	Weight Kg
	HP	W		D	E	F	G	H	I	J	K	L	M	N	Φd			
A-202	1/32	20	30	58	85	60	6	35	67.5	23	—	160	100	100	7	M6	M	2.3

※ 1. A-202 only single phase (1 Φ) with 110V;120V;220V;240V

4 Pole Speed Vibrator

Theoretical speed in 50 Hz: 1500 rpm
Theoretical speed in 60 Hz: 1800 rpm

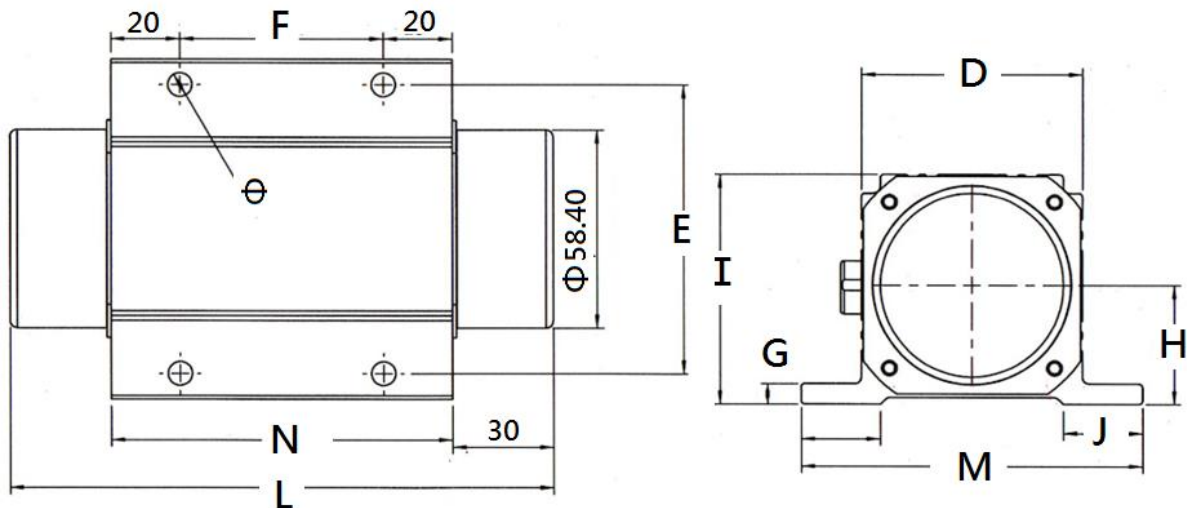
4 Pole Dimensions

Models	Power		Force Kg	Outer dimensions (mm)												Base Screw	Housing	Weight Kg
	HP	W		D	E	F	G	H	I	J	K	L	M	N	Φd			
B-404	1/16	45	30	111	125	50	16	59	150	25	—	197	150	85	11	M10	A	7.2
B-409	1/8	90	100	111	125	75	16	59	150	25	—	222	150	110	11	M10	A	7.5
B-412	1/6	150	160	111	125	90	16	59	150	25	—	253	150	140	11	M10	A	11
B-418	1/4	180	400	190	180	90	13	100	200	50	57	325	230	170	18	M16	B	28
B-425	1/3	250	550	190	180	90	13	100	200	50	57	325	230	170	18	M16	B	30
B-437	1/2	370	900	222	220	140	16	120	238	65	60	340	275	210	20	M19	C	50
B-475	1.1	750	2000	267	260	140	20	145	285	80	90	445	320	267	28	M25	C	84
B-4110	1(1/2)	1100	2500	267	260	140	20	145	285	80	90	445	320	267	28	M25	C	96
B-4150	2	1500	3500	295	310	170	25	160	310	87	—	535	380	240	32	M30	C	136
B-4220	3	2200	5000	360	360	210	30	185	365	110	105	620	450	339	35	M33	C	178
B-4370	5	3700	7500	360	360	210	30	185	365	110	105	620	450	339	35	M33	C	293
B-4550	7(1/2)	5500	8500	410	380	290	45	220	425	145	135	687	507	441	38	M39	C	300
B-4750	10	7500	10000															

※ 1. B-404, B-409 have single phase (1 Φ) 110~120,220~240 and three phase (3 Φ) options; B-412 A-218 have single phase (1 Φ) 220~240 and three Phase (3 Φ) ; others are only three Phase (3 Φ)

※ 2. Red word means customize

4 Pole Single Phase (1Φ) Micro Vibrator motor



Models	Power		Force Kg	Outer dimensions (mm)												Base Screw	Housing	Weight Kg
	HP	W		D	E	F	G	H	I	J	K	L	M	N	Φd			
B-402	1/32	20	20	58	85	60	6	35	67.5	23	—	160	100	100	7	M6	M	2.3

※ 1. B-402 only single phase (1 Φ) with 110V;120V;220V;240V

6 Pole Vibrator Speed

Theoretical speed in 50 Hz: 1000 rpm

Theoretical speed in 60 Hz: 1200 rpm

6 Pole Dimensions

Models	Power		Force Kg	Outer dimensions (mm)												Base Screw	Housing	Weight Kg
	HP	W		D	E	F	G	H	I	J	K	L	M	N	Φd			
C-618	1/4	180	300	190	180	90	13	100	200	50	57	325	230	170	18	M16	B	31
C-637	1/2	370	800	222	220	140	16	120	238	65	60	385	275	210	20	M19	C	55
C-675	1	750	1500	267	260	140	20	145	285	80	90	445	320	267	28	M25	C	96
C-6110	1(1/2)	1100	1800	267	260	140	20	145	285	80	90	445	320	267	28	M25	C	106
C-6150	2	1500	2500	295	310	170	25	160	310	87	—	590	380	240	32	M30	C	152
C-6220	3	2200	3800	360	360	210	30	185	365	110	105	620	450	339	35	M33	C	
C-6370	5	3700	5000	410	380	290	45	220	425	145	135	687	507	441	38	M39	C	294
C-6550	7(1/2)	5500																
C-6750	10	7500																

※ 1. Red word means customize

※ 2. 8 poles customize available

~Design and specifications are subject to change without notice~

Mechanical vibration applications

2 Pole

- Preventing coagulation in materials storage bins and feeder conveyance pipes used by manufacturers.
- Deal with powder and other tiny granular material in containers to load maximize capacity.
- Dislodging dust and partialities into collectors to control air pollution.
- Non-destructive vibration testing machines used in the computer and electronics industries.
- Vibrating topple over concrete forms.
- De-bubbling epoxy resin products such as PCBs. etc.

4 Pole

- ◇ Preventing pipe clogging on small size materials storage tanks.
- ◇ Deal with powder and other tiny granular material in containers.
- ◇ Dual motor resonance-type bilge machines.
- ◇ Materials conveyance and sandblasters in casting plants.
- ◇ Vibrating liquid filtration machines for sludge.
- ◇ Vibration-type electrostatic filters.

- ✧ PVC granule sifting machines having a processing capacity.
- ✧ Medium to small size conveyor and sifting machines.

6 Pole

- ✧ Preventing pipe clogging on medium and small size materials storage tanks.
- ✧ Vertical vibrating coolers and conveyors for grainy materials.
- ✧ Water or air type vibrating coolers.
- ✧ Mold release machines, recirculating sandblasters, and cooling sifters in casting plants.
- ✧ Vibrating sifters for raw material such as food or chemical (plastic, PCX granules).
- ✧ Conveyor sifter machines used in mineral extraction plants and mines.
- ✧ Medium distance conveyors and sifting machines.

8 Pole

- ✧ Large scale packing conveyor machines.
- ✧ Vibrating sifters and vertical coolers for wet chemical ingredients.
- ✧ Heated glass waste water cooling conveyors.
- ✧ Food and chemical raw materials dehydrating and cooling conveyors.
- ✧ Food cleaning, drying and sifting machines.
- ✧ Earthquake simulation machines (power adjustable).
- ✧ Long-distance material conveyors (six meters or less).
- ✧ Low-speed, long-distance conveyors (utilized for electroplating, casting, etc.)
- ✧ Vibration testing machines for large items

About Us

CHUAN SHENG ELECTRIC CO., LTD. established in 2009 and located in Great Taichung Industry Area, Taiwan, where has convenient transportation access. We are professional manufacturer, supplier and exporter in motor related area. Our more than 30 years experienced R&D team with capable manufacture produce high quality and cost effective motor with CE certification as well as customize vibration motor.



Contact Us

**I AND I INTERNATIONAL CO., LTD.
CHUAN SHENG ELECTRIC CO., LTD.**

- TEL: +886-4-2278-0677
- FAX: +886-4-2275-3287
- E-mail: iniint.sales@gmail.com
- Website: www.chuan-sheng.com.tw
- Website: www.iniint.com
- ADD: No.6, Aly. 3, Ln. 130, Xizhou Rd., Taiping Dist., Taichung City 411, Taiwan

